

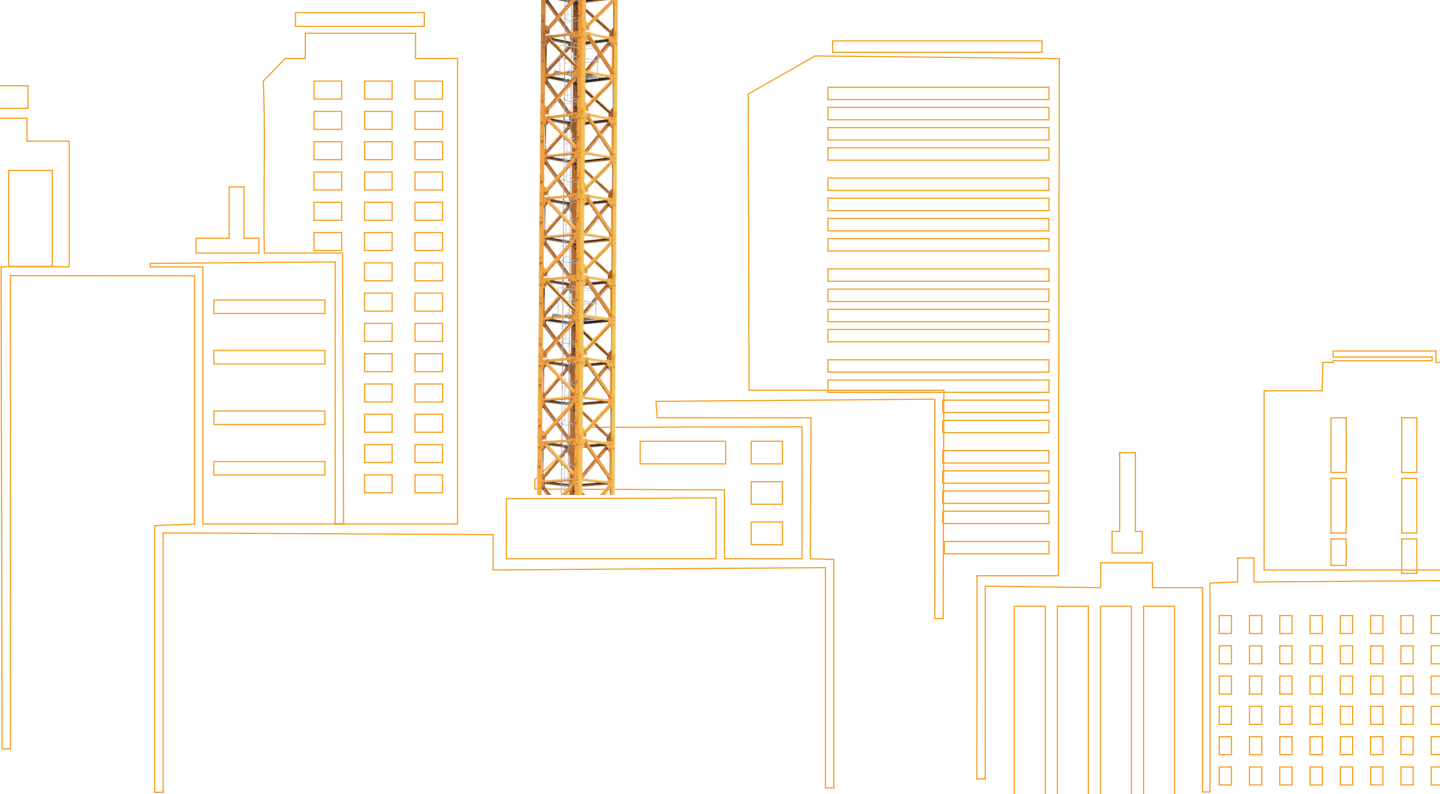


1943-2022
XCMG 79 年

XCMG

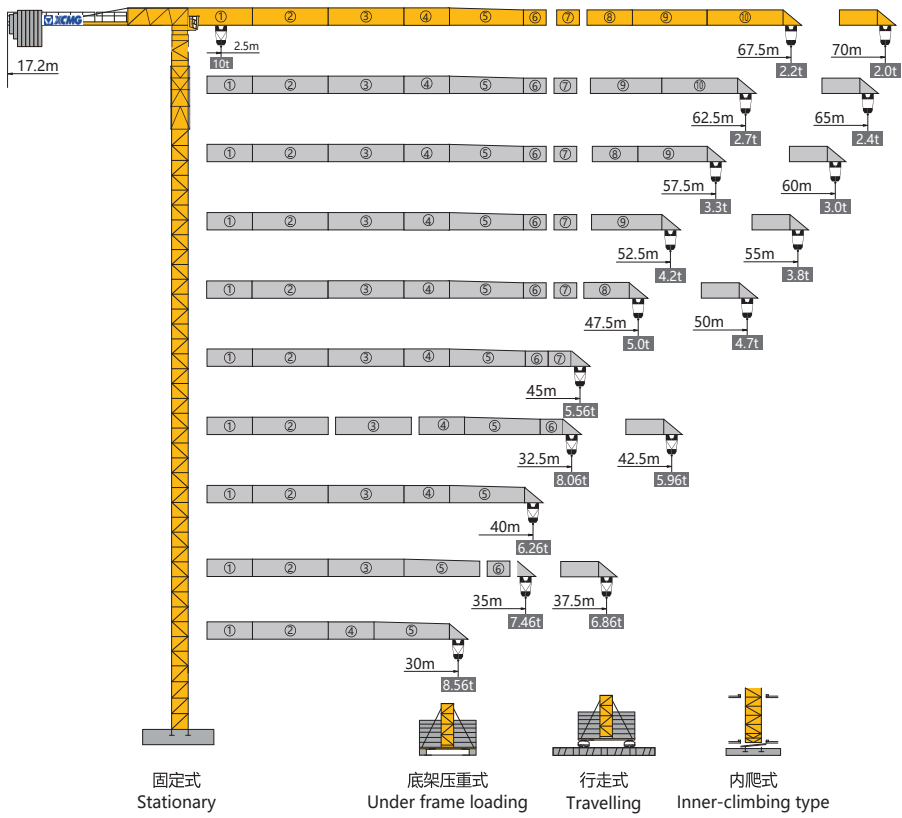
TOPLESS TOWER CRANE 平头式塔机

XGT7020-10S1



外形尺寸

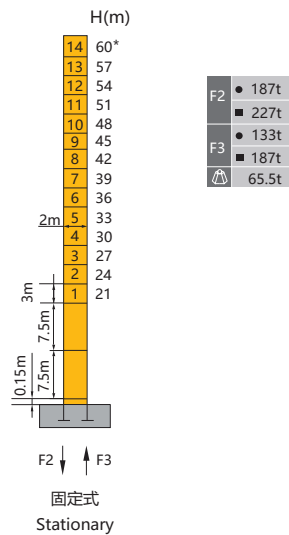
Dimensions



★ 可变换的其他安装方式与我们协商 Mounting possibilities Consult us.

塔身与反力

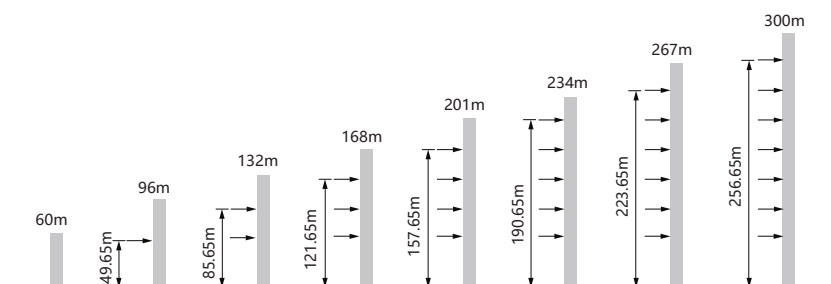
Masts and Reactions



H(m) 臂根铰点高度 Height of hinged point at jib root
 ● 工作状态反力 Reactions in service ■ 非工作状态反力 Reactions out of service
 ⚠ 独立高度最大臂长的自重 (不含平衡重, 不含压重)
 Weight with max free standing, max jib (without counter-jib ballast and load)

附着

Anchorage



★ 如需其他的高度, 请与我们联系。 For other heights, consult us please.

起重特性 Load Diagrams

起重臂 jib R(m)	α	R _{min} m	R(C _{max}) m	C _{max} kg	幅度 (m) / 起重重量 (kg)																							
					20	25	30	32.5	35	37.5	40	42.5	45	47.5	50	52.5	55	57.5	60	62.5	65	67.5	70					
70		2.5	32.2	5000						5000	4950	4560	4220	3920	3650	3420	3210	3020	2850	2700	2560	2430	2310	2200	2090	2000		
		2.5	16.3	10000	7960	6170	4980	4520	4130	3790	3490	3220	2990	2780	2590	2420	2270	2130	2000	1880	1770	1670	1570					
67.5		2.5	33.5	5000							5000	4760	4400	4090	3820	3580	3360	3160	2990	2830	2680	2540	2420	2310	2200			
		2.5	16.9	10000	8320	6460	5220	4740	4330	3980	3670	3390	3150	2930	2740	2560	2400	2250	2120	1990	1880	1770						
65		2.5	34.6	5000								5000	4930	4570	4250	3960	3710	3490	3290	3100	2940	2790	2650	2520	2400			
		2.5	17.5	10000	8620	6700	5420	4930	4500	4140	3820	3540	3280	3060	2860	2670	2510	2360	2220	2090	1970							
62.5		2.5	36.6	5000									5000	4870	4530	4230	3970	3730	3510	3320	3140	2980	2840	2700				
		2.5	18.5	10000	9190	7150	5800	5280	4830	4440	4100	3800	3540	3300	3090	2890	2720	2550	2410	2270								
60		2.5	38.4	5000										5000	4770	4460	4180	3930	3710	3500	3320	3150	3000					
		2.5	19.4	10000	9680	7550	6130	5580	5110	4700	4350	4030	3750	3500	3280	3080	2890	2720	2570									
57.5		2.5	39.9	6000											5000	4990	4660	4370	4110	3880	3670	3480	3300					
		2.5	20.2	10000	10000	7880	6410	5840	5350	4390	4560	4230	3940	3680	3450	3240	3050	2870										
55		2.5	43.1	5000												5000	4770	4490	4240	4010	3800							
		2.5	21.8	10000	10000	8600	7000	6390	5860	5400	5000	4650	4340	4060	3810	3580	3370											
52.5		2.5	44.9	5000													5000	4990	4700	4440	4200							
		2.5	22.7	10000	10000	9000	7340	6700	6150	5670	5260	4890	4560	4270	4010	3770												
50		2.5	47.3	5000														5000	4970	4700								
		2.5	23.9	10000	10000	9530	7770	7100	6520	6020	5580	5200	4850	4540	4270													
47.5		2.5	47.5	5000															5000									
		2.5	25.3	10000	10000	10000	8290	7570	6960	6430	5970	5560	5200	4870														
45		2.5	45.0	5000																5000								
		2.5	26.8	10000	10000	10000	8830	8080	7430	6870	6380	5940	5560															
42.5		2.5	42.5	5000																	5000							
		2.5	26.9	10000	10000	10000	8850	8100	7450	6890	6390	5960																
40		2.5	40.0	5000																		5000						
		2.5	26.4	10000	10000	10000	8670	7930	7290	6740	6260																	
37.5		2.5	37.5	5000																			5000					
		2.5	26.8	10000	10000	10000	8820	8070	7420	6860																		
35		2.5	35.0	5000																				5000				
		2.5	26.9	10000	10000	10000	8870	8100	7460																			
32.5		2.5	32.5	5000																					5000			
		2.5	26.8	10000	10000	10000	8810	8060																				
30		2.5	30.0	5000																						5000		
		2.5	26.0	10000	10000	10000	8560																					

配重配置 Counter-jib Ballast

配重配置 Counter-jib Ballast			2800-2100-1800		
(m)	(m)	(kg)	PZ2800	PZ2100	PZ1800
70	17.2	17900	5	1	1
67.5	17.2	17900	5	1	1
65	17.2	17900	5	1	1
62.5	17.2	16100	5	1	0
60	17.2	16100	5	1	0
57.5	17.2	16100	5	1	0
55	17.2	16100	5	1	0
52.5	17.2	15800	5	0	1
50	17.2	15800	5	0	1
47.5	17.2	15800	5	0	1
45	17.2	15800	5	0	1
42.5	17.2	15100	4	1	1
40	17.2	14000	5	0	0
37.5	17.2	14000	5	0	0
35	17.2	13300	4	1	0
32.5	17.2	11200	4	0	0
30	17.2	10500	3	1	0

传动机构 Mechanisms

传动机构 Mechanisms	图例 Legend	型号 Model	速度 (m/min) Speed	起重重量 (t) Hoist Weight	容绳量 (m) Rope Capacity	功率 (kW) Power	
起升 Hoisting		37LVF25		0-40	5	503 >503*	37
				0-64	2.3		
				0-90	1.5		
				0-20	10		
				0-32	4.6		
变幅 Trolleying		4DVF4A	0-75m/min			4	
回转 Slewing		15RVF	0-0.8r/min			2×7.5	
行走 Travelling		RT	0-25m/min			4×4	
电源 Main Supply				~380V (±10%) 50Hz			
总功率 (不含顶升和行走) Gross Power (Excluding climbing and travelling)					56kW		

★ 如需其他配置，请与我们联系。 For other configuration, consult us please.

此样本所列技术参数不受法律约束，具体请详见相应产品说明书。

These brochure of specifications and data are not legally binding,specific instructions please based on our produt manuals.