

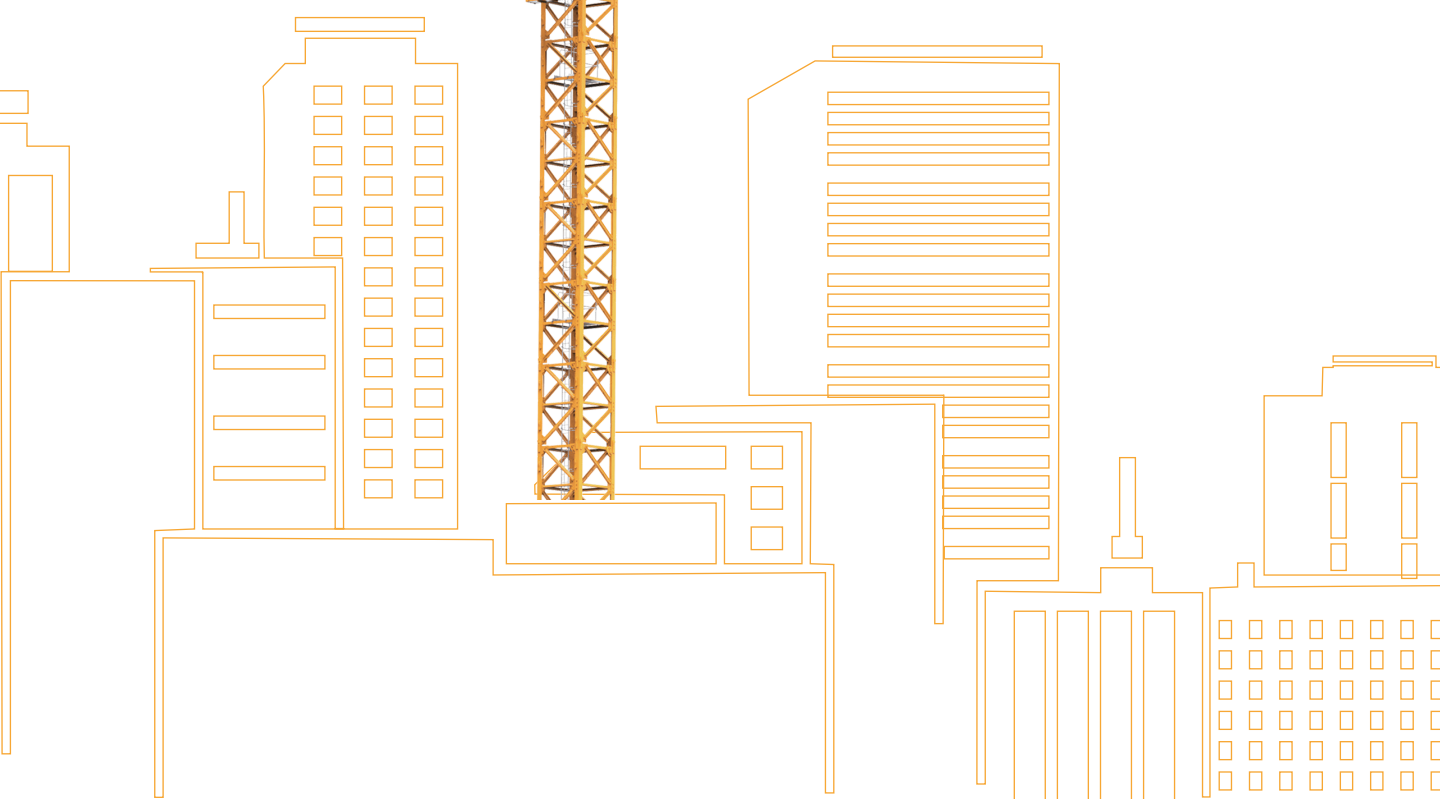


1943-2022
XCMG 79 年

XCMG

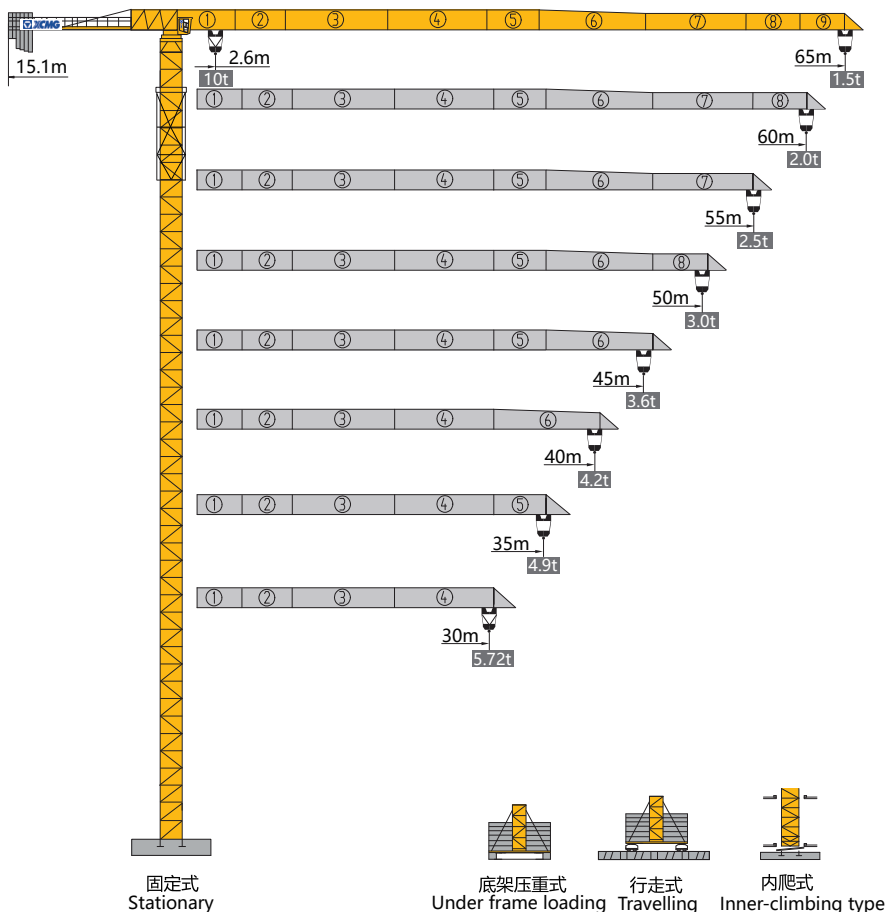
TOPLESS TOWER CRANE 平头式塔机

XGT6515-10S



外形尺寸

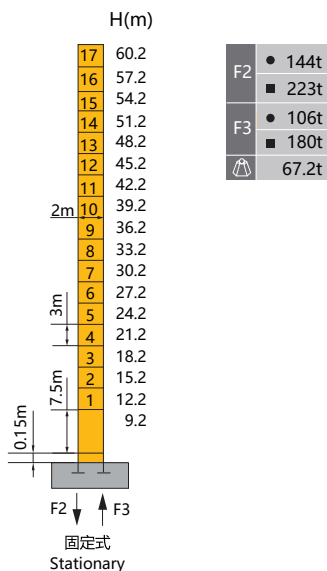
Dimensions



★ 可变换的其他安装方式与我们协商 Mounting possibilities Consult us.

塔身与反力

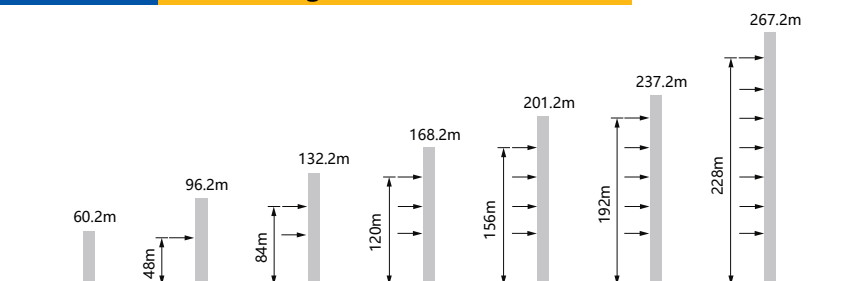
Masts and Reactions



H(m) 吊钩高度 Height of the hook ● 工作状态反力 Reactions in service ■ 非工作状态反力 Reactions out of service
 ⚠ 独立高度最大臂长的自重 (不含平衡重, 不含压重)
 Weight with max free standing, max jib (without counter-jib ballast and load)

附着

Anchorage



★ 如需其他的高度, 请与我们联系。 For other heights, consult us please.

起重特性

Load Diagrams

起重臂 Jib R(m)	α	R _{min} m	R(C _{max}) m	C _{max} kg	幅度 (m) / 起重重量 (kg)							Range(m) / Loading (kg)					
					10	15	20	25	30	35	40	45	50	55	60	65	
65		2.6	27.1	5000	5000				4425	3642	3058	2606	2245	1951	1706	1500	
		2.6	15.0	10000	10000	7190	5496	4379	3587	2996	2539	2174	1876	1629	1420		
60		2.6	30.0	5000	5000				4149	3501	2998	2598	2271	2000			
		2.6	16.6	10000	10000	8083	6205	4967	4089	3435	2928	2524	2194	1920			
55		2.6	32.1	5000	5000				4510	3810	3278	2849	2500				
		2.6	17.7	10000	10000	8717	6709	5385	4447	3747	3205	2772	2420				
50		2.6	33.4	5000	5000				4726	4004	3445	3000					
		2.6	17.9	10000	10000	8837	6805	5464	4514	3806	3257	2820					
45		2.6	34.5	5000	5000				4925	4178	3600						
		2.6	19.6	10000	10000	9439	7283	5861	4853	4102	3520						
40		2.6	34.7	5000	5000				4950	4200							
		2.6	19.6	10000	10000	9475	7311	5885	4874	4120							
35		2.6	34.4	5000	5000				4900								
		2.6	18.9	10000	10000	9379	7235	5821	4820								
30		2.6	30.0	5000	5000												
		2.6	18.6	10000	10000	9224	7112	5720									

配重配置

Counter-jib Ballast

配重配置 Counter-jib Ballast		3200-2300-1000			
(m)	(m)	(kg)	PZ3200	PZ2300	PZ1000
65	15.1	17500	3	3	1
60	15.1	16500	3	3	0
55	15.1	15200	3	2	1
50	15.1	14200	3	2	0
45	15.1	13300	2	3	0
40	15.1	12900	3	1	1
35	15.1	11000	2	2	0
30	15.1	9700	2	1	1

传动机构

Mechanisms

传动机构 Mechanisms	图例 Legend	型号 Model	速度 (m/min) Speed	起重重量 (t) Hoist Weight	容绳量 (m) Rope Capacity	功率 (kW) Power	
起升 Hoisting		37LVF25		0-40	5	503 >503 *	37
				0-60	2.5		
				0-90	1.3		
				0-20	10		
				0-30	5		
				0-45	2.5		
变幅 Trolleying		4DVF4A	0-58m/min		4		
回转 Slewing		11RVF	0-0.7r/min		2×5.5		
行走 Travelling		RT	0-25m/min		4×4		
电源 Main Supply					~ 380V(±10%) 50Hz		
总功率 (不含顶升和行走) Gross Power (Excluding climbing and travelling)					52kW		

* 如需其他配置, 请与我们联系。 For other configuration, consult us please.

此样本所列技术参数不受法律约束, 具体请详见相应产品说明书。

These brochure of specifications and data are not legally binding, specific instructions please based on our product manuals.